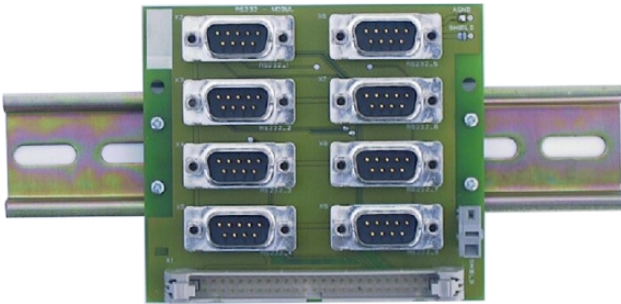


### TIP866-IO DIN Rail Mounting I/O Module (8 x DB9) for TIP866/867

#### Application Information

The TIP866-IO is a DIN Rail Mounting I/O module for the serial interfaces TIP866 and TIP867.

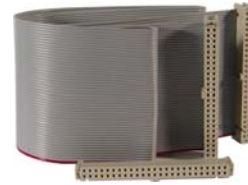
The TIP866-IO supports all versions of the TIP866 (RS232, RS422 and TTL-Level interfaces), the TIP867 (RS485 interface) and all versions of the IP-Octal.



Eight DB9 male connectors are mounted on the module.

The TIP866-IO supports TXD, RXD, RTS, CTS and GND for each of the eight channels of the TIP866-10x/11x (RS232 / TTL-Level).

TxD+/-, RxD+/-, GND are supported for the TIP866-20x (RS422) and Dx+/-, GND for the TIP867-10x (RS485).



TA106-10: ribbon cable with 50 pin ribbon cable connectors

#### Technical Information

- DIN Rail Mounting I/O module, 95 mm x 83 mm
- 8 DB9 male connectors
- Terminal point for shield of all 8 DB9 connectors
- Supports all versions of the TIP866, TIP867 and IP-Octal
- Cable TA106, 0.8m ribbon cable with 50 pin ribbon cable connectors, is included

#### Order Information

**TIP866-IO-10R** DIN Rail Mounting I/O Module with DB9 male connectors for TIP866/867 and one TA106 cable

TIP866-IO-10 None RoHS compliant version of TIP866-IO-10R

**TIP866-IO-10-DOC** User Manual