

TPCI270 PMC Carrier for PCI Card Interface

Application Information

The TPCI270 is a standard 33 MHz, 32 bit PCI carrier for a single PMC Card. It provides PMC front I/O and PMC P14 rear I/O. This PMC to PCI adapter is used to build modular, flexible and cost effective I/O solutions with PMC devices in standard PCI systems.

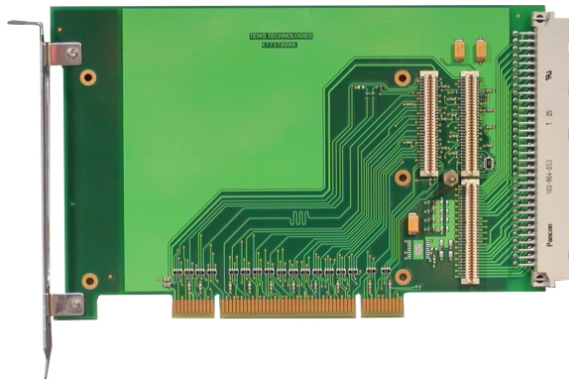
The TPCI270 is used as a mechanical adapter to connect a PMC module into standard PCI bus based systems.

Operation with 3.3V and 5.0V PCI I/O signaling voltage guaranties compatibility with nearly all PC main boards.

The TPCI270-2x provides a local 3.3V Generation with a typical current limit of 2A for PC mainboards that do not support 3.3V as PCI supply voltage.

The TPCI270 offers standard PMC front I/O and PMC P14 rear I/O routed to a VME P2 style connector (603-2-IEC-C064-M).

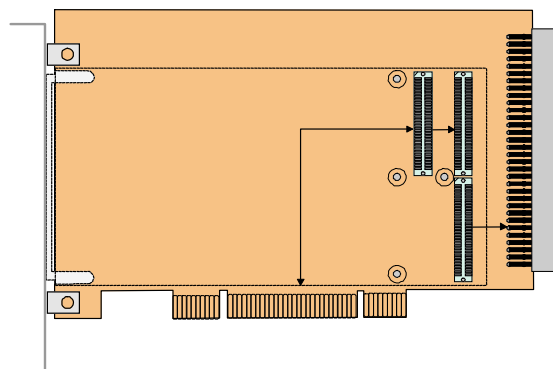
Operating temperature range is -40°C to +85°C.



For First-Time-Buyers the Engineering Documentation TPCI270-ED is recommended. The Engineering Documentation includes TPCI270-DOC, schematics and data sheets of the TPCI270.

Technical Information

- PCI Card Interface, PCI 2.2 compliant interface
- One PMC sites conforming to PMC standard (IEEE 1386)
- PCI Interface: 33 MHz; 32 bit
- PCI I/O signaling voltage: 3.3V or 5.0V PCI 2.2 compliant interface
- Front panel I/O
- PMC P14 rear I/O connected to VME P2 style connector (603-2-IEC-C064-M)
- Size: 107 mm x 170 mm
- Operating temperature -40°C to +85°C



Order Information

RoHS Compliant

- | | |
|--------------------|---|
| TPCI270-10R | PMC Carrier for PCI Card Interface |
| TPCI270-20R | PMC Carrier for PCI Card Interface with local 3.3 Volt Generation |

None RoHS Compliant

- | | |
|------------|--|
| TPCI270-10 | None RoHS compliant version of TPCI270-10R |
| TPCI270-20 | None RoHS compliant version of TPCI270-20R |

Documentation

- | | |
|--------------------|---|
| TPCI270-DOC | User Manual |
| TPCI270-ED | Engineering Documentation, includes TPCI270-DOC |