

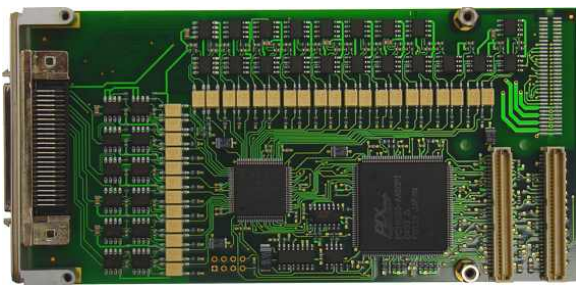
The Embedded I/O Company

TPMC700 32 / 16 Digital Outputs (24V, 0.5A) High Side Switches

Application Information

The PMC compatible module TPMC700 has 32 (16) digital outputs with galvanic isolation via optocouplers. All outputs resist short-circuits and are protected against thermal overload. The output drivers are capable of driving 0.5A continuous per channel as high side switch. A hardware watchdog clears all outputs in case of trigger failure.

The TPMC700-1x provides front panel I/O with a HD50 SCSI-2 type connector, the TPMC700-2x provides P14 I/O.

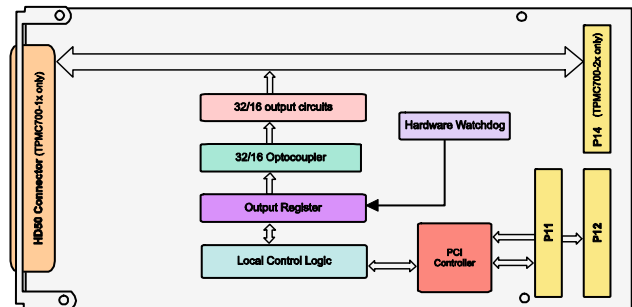


For First Time Users the Engineering Documentation TPMC700-ED is recommended. The Engineering Documentation includes TPMC700-DOC, schematics and data sheets.

Software Support (TPMC700-SW-xx) is available for different operating systems.

Technical Information

- Standard single-width 32 bit PMC module conforming to IEEE P1386.1
- PCI 2.1 compliant interface
- Board size: 149 mm x 74 mm
- 32 / 16 digital outputs, high side switches
- 24 V signal voltage, current per output 0.5A
- Optocoupler for galvanic isolation
- Outputs are short-circuit protected
- Outputs are isolated by optocouplers from the system and in two groups against each other
- Outputs are protected against thermal overload
- Watchdog timer resets all channels in case of trigger failure



Order Information

RoHS Compliant

| | |
|--------------------|-------------------------------------|
| TPMC700-10R | 32 Digital Outputs, front panel I/O |
| TPMC700-11R | 16 Digital Outputs, front panel I/O |
| TPMC700-20R | 32 Digital Outputs, P14 I/O |
| TPMC700-21R | 16 Digital Outputs, P14 I/O |

None RoHS Compliant

| | |
|-------------------|--|
| TPMC700-10 | None RoHS compliant version of TPMC700-10R |
| TPMC700-11 | None RoHS compliant version of TPMC700-11R |
| TPMC700-20 | None RoHS compliant version of TPMC700-20R |
| TPMC700-21 | None RoHS compliant version of TPMC700-21R |

Documentation

| | |
|--------------------|---|
| TPMC700-DOC | User Manual |
| TPMC700-ED | Engineering Documentation, includes TPMC700-DOC |

Software

| | |
|----------------------|--|
| TPMC700-SW-25 | Integrity Software Support |
| TPMC700-SW-42 | VxWorks Software Support (Legacy and VxBus-Enabled Software Support) |
| TPMC700-SW-65 | Windows XP/XPE/2000 Software Support |
| TPMC700-SW-72 | LynxOS Software Support |
| TPMC700-SW-82 | Linux Software Support |
| TPMC700-SW-95 | QNX 6 Software Support |

For other operating systems please contact TEWS.

Related Products

| | |
|----------------|---|
| TA301 | Cable Kit for modules with HD50 SCSI-2 type connector |
| TPIM001 | PIM I/O Module with HD50 SCSI-2 type connector |